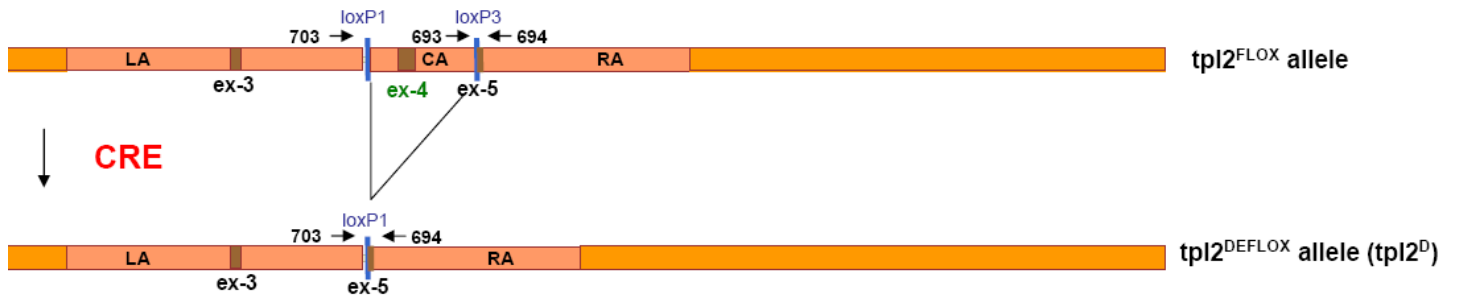


Genotyping of Tpl2 conditional knock-out mice



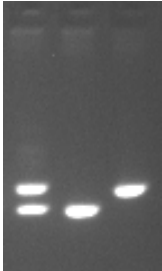
Primers

loxp3s	# 693	5'-GTT TTC ACC TGA CTG CTC CC-3'
loxp3a	# 694	5'-AGC ATT TCC AGA CCA TCA CC-3'
M3Fb2	# 703	5'-ATG GCT TTG TGG GAT TGT TGT TCC-3'

PCR products

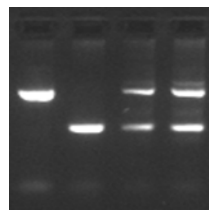
WT allele band	693-694	307 bp
FLOX allele band	693-694	368bp
DEFLOX allele band	703-694	653bp

FL/+ +/+ FL/FL



693-694 PCR
Optimum Ta=60°C

D/D +/+ D/+ D/+



703-694 or 703-693-694 PCR
Optimum Ta=57°C, 1min