

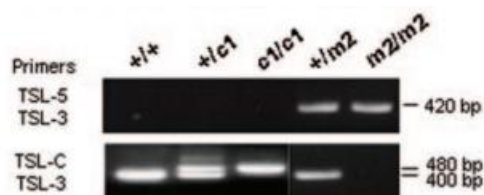


CNB-CSIC Mouse Embryo Cryopreservation Facility – Spanish EMMA node

GENOTYPING PROTOCOL

EMMA ID number	EM:04806
Mouse mutant strain	B6;129S7-Cadm1tm1.2Brd/WtsiCnbc
Gene/Locus affected	Cadm1
MGI ID number	MGI: 1889272
Mouse strain common name	Tslc1-Brdm2
Owner/Provider of this mouse strain	Louise Van Der Weyden
DNA primers for wild-type allele	TSL-5_F: 5' -AGCATCCCTTTCCACCATAGTTTTCTCTCT-3' TSL-3_R: 5' -TACCAGGAGGGGAGAAGAGGCCAGAGC-3'
PCR conditions for wild-type allele	Program: 2'94°;30x(30"94°,1'65°,30"72°);10'72° PCR product:
DNA primers for mutant allele	TSL-C_F: 5' -AGTCTACATTTGGGAATCAAATGGTAAGG-3' TSL-3_R: 5' -TACCAGGAGGGGAGAAGAGGCCAGAGC-3'
PCR conditions for mutant allele	Program: 2'94°;30x(30"94°,1'65°,30"72°);10'72° PCR product:
Source of genotyping information	Provider or PubMed ID: 16611999

The two primer pairs (either TSL-5/TSL-3 or TSL-C/TSL-3) can distinguish between all five genotypes (+/+, +/c1, c1/c1, +/m2, and m2/m2) based on the presence and size of the product(s),



2% agarose gel.