

EMMA ID: 02354

Gene: *Kcnb2*

Common name: LEXKO-1551, CHA385N1

Allele: *Kcnb2*^{tm1Lex}

Genotyping Information

Genotyping by end-point PCR based on gel is composed of a genespecific short range PCR using primers on wild type allele and a mutant allele-specific short range PCR. The combined results show the genotype of the mice. For example: mutant positive, wild type positive = Heterozygous.

PCR primer pairs and expected size bands

Assay	Forward Primer	Reverse Primer	Expected Size Band (bp)
Wildtype	Primer 18	Primer 19	312
Mutant	Neo3a	Primer 17	472

Primer sequences

Primer Name	Sequence 5' --> 3'
Neo3a	GCAGCGCATCGCCTTCTATC
Primer 17	GTGTCTCAGAAATGGCGTGTC
Primer 18	GGATACTGAAACTCGCCAGAC
Primer 19	GTATAGGAAGGGCAATAACCAG

PCR setup (Qiagen, Hot Start Plus)

Component	Volume (µl) 1x	Final conc.
DNA (~ 50-100 ng)	2	
Q-Solution (5x)	2,5	0,5
PCR-Buffer (10x)	2,5	1
DNTP mix (10 mM)	0,5	0,2
MgCl ₂ (25 mM)	1,5	1,5
Primer 1 (10 pmol/µl)	1	0,4
Primer 2 (10 pmol/µl)	1	0,4
Taq Polymerase (5 U/µl)	0,3	0,06
H ₂ O*	13,7	
Final volume	25	

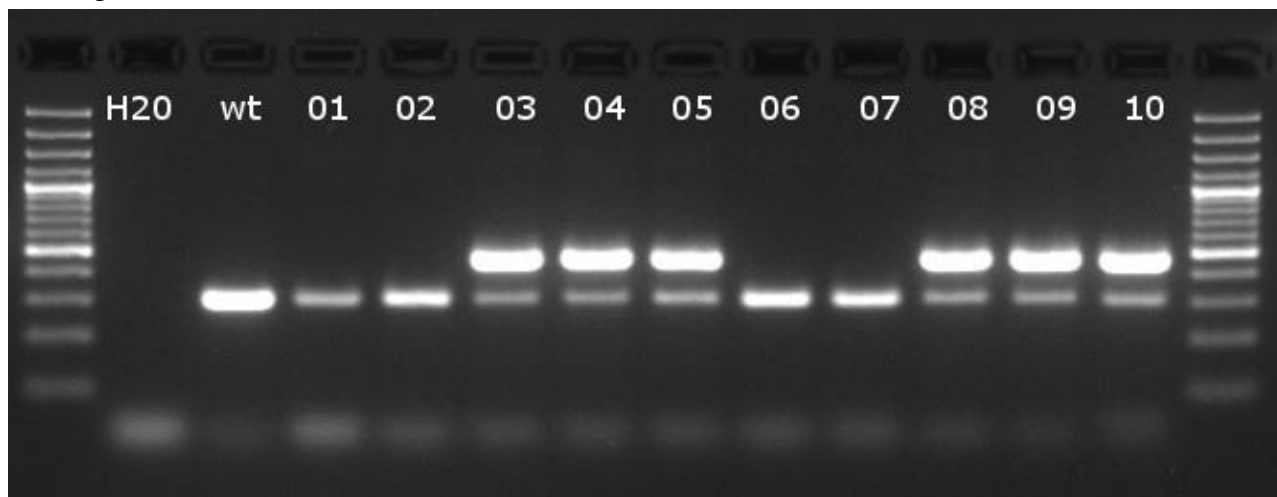
* The amount of H₂O is adjusted with the number of primer.

Amplification conditions

PCR Settings	Temperature (°C)	Time	# of cycles
1 Denaturation (Melting)	95°C	5 min	1
2 Amplification (Melting, Annealing, Polym.)	94°C	30 sec	39
	65°C	45 sec	
	72°C	45 sec	
3 Polymerisation	72°C	10 min	1
4 Cooling	12°C	hold	1

These PCR conditions have been optimized for our methods and preparation kits. Adaptions may be required.

Gel Image



Separated by gel electrophoresis on a 2% agarose gel.